

# How to install and setup employee performance appraisal software “eValuasi”

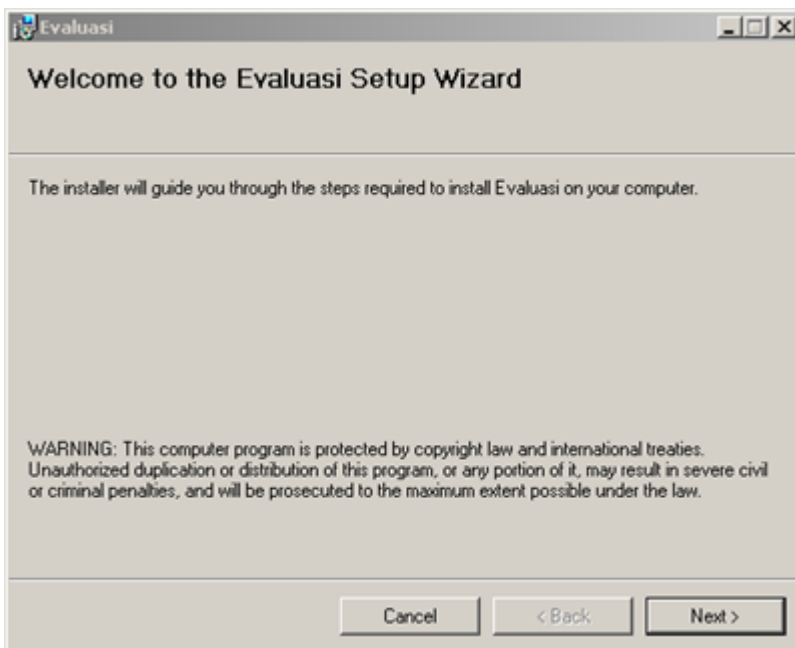
## System Requirements

before install Evaluasi your machine you want to be a server need to have the these component installed

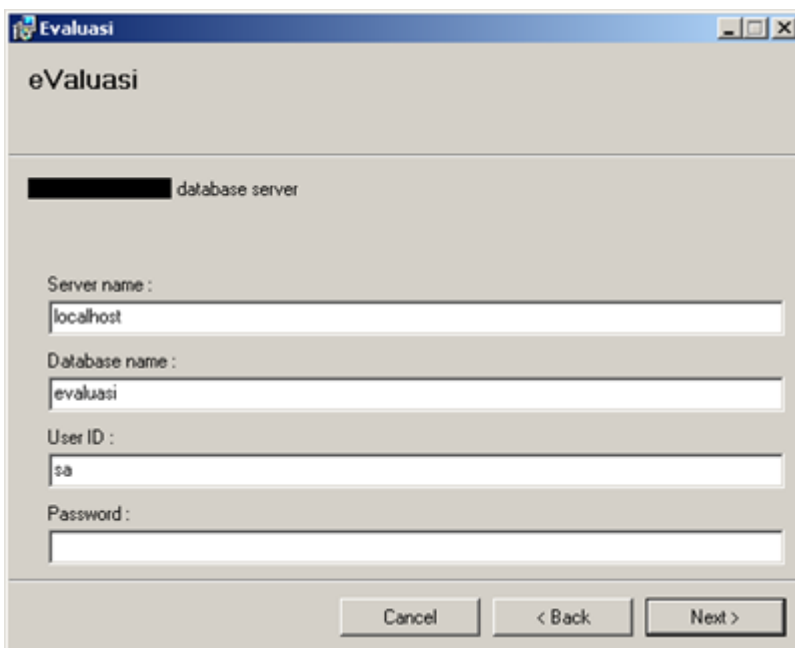
1. Web Server
  - 1.1. IIS 6 or higher version
  - 1.2. .NET Framework 2.0
2. Database Server
  - 2.1. SQL Server 2005 or higher version

## How to Install Program

If your server has meet the requirement, you can install this package by extract a zip file and execute Evaluasi.msi or setup.exe file and follow a wizard step by step



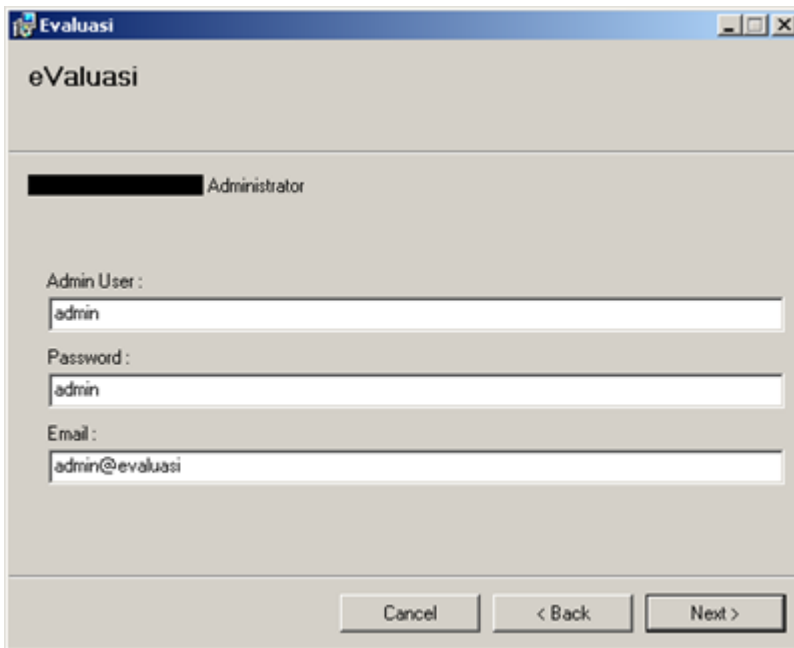
Click next button



Specify your database information for Evaluasi

- Server name: input IP or company name of database server
- Database name: input database name for Evaluasi
- User ID: input database user id and this user need to have this privilege
  - create database privilege
  - read/write table privilege
  - execute store procedure privilege
- Password: password of this user id you have input

Click the Next button

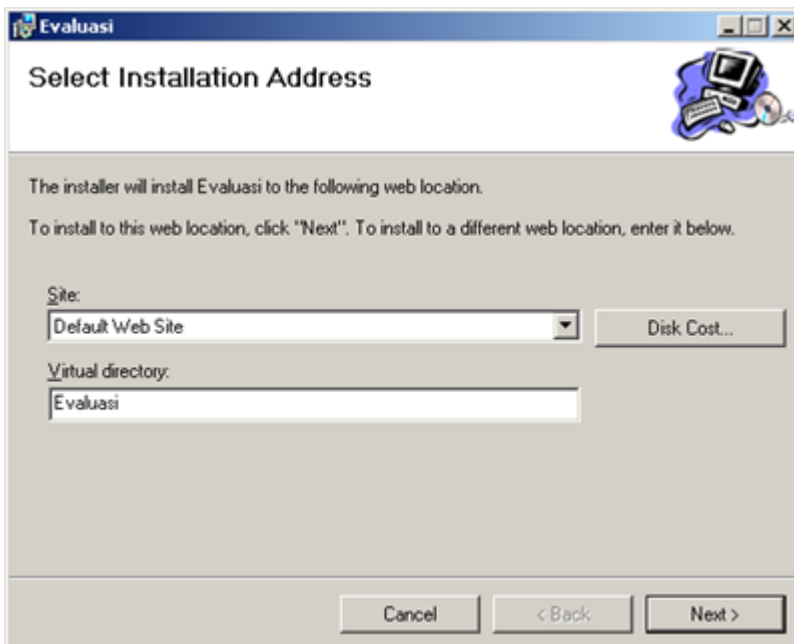


The screenshot shows a window titled 'eValuasi' with a blue header bar. Below the title bar, the text 'eValuasi' is displayed. A blacked-out field is labeled 'Administrator'. Below this, there are three input fields: 'Admin User:' with the value 'admin', 'Password:' with the value 'admin', and 'Email:' with the value 'admin@evaluasi'. At the bottom, there are three buttons: 'Cancel', '< Back', and 'Next >'.

Specify Admin User for the system, which this admin user you can manage all of the system

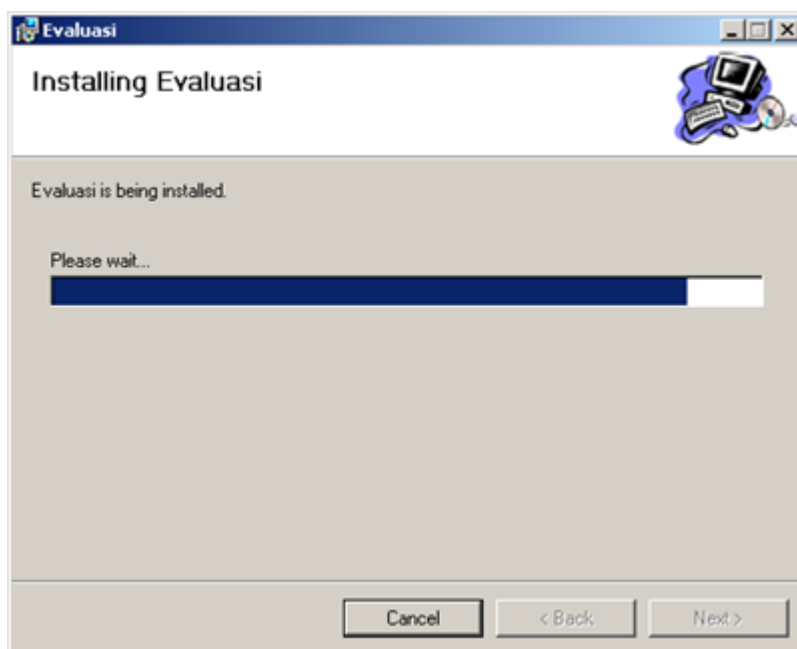
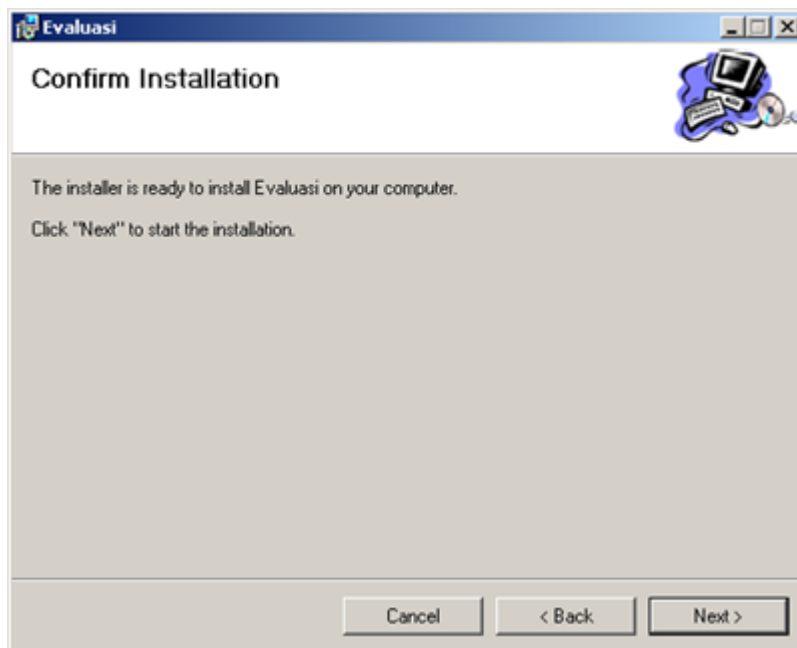
- Admin User: specify your admin user
- Password: specify password of admin.
- Email: specify email of admin

Click the Next button

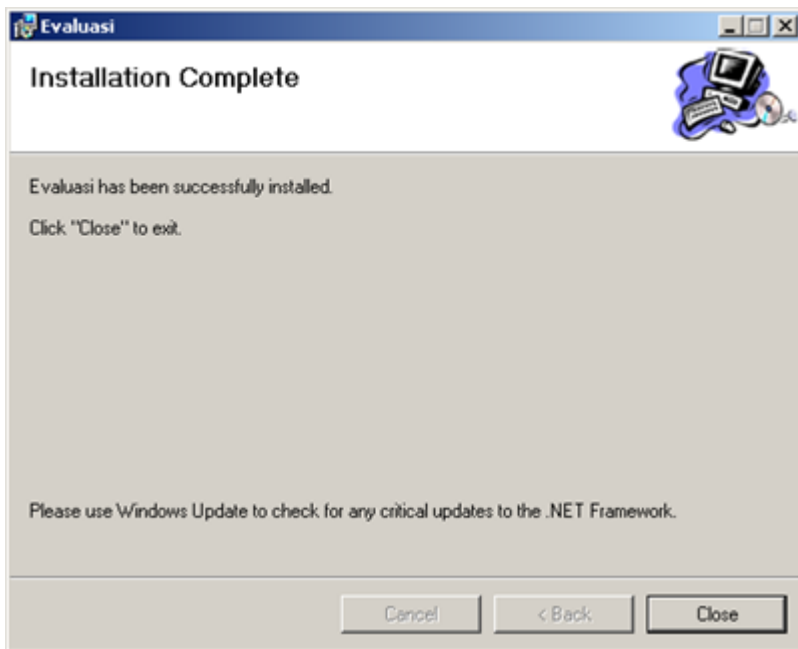


The screenshot shows a window titled 'Select Installation Address' with a blue header bar. Below the title bar, there is a small icon of a computer and a floppy disk. The main text reads: 'The installer will install Evaluasi to the following web location. To install to this web location, click "Next". To install to a different web location, enter it below.' Below this text, there are two input fields: 'Site:' with a dropdown menu showing 'Default Web Site' and a 'Disk Cost...' button, and 'Virtual directory:' with the value 'Evaluasi'. At the bottom, there are three buttons: 'Cancel', '< Back', and 'Next >'.

Click the Next button



Wait for installer to setup your system.



Click close button to finish installation

Login to your system at this URL: <http://localhost/evaluasi>.